



Embedded Linux Software Development Kit

Designed For the Prometheus™ and Hercules™ CPUs from Diamond Systems

2.4 Kernel, CD-ROM with Flash Linux Image, Flashdisk and Hard Disk Options



Rev. 03-04

Get your embedded Linux development project going faster with the new Embedded Linux Development Kit from Diamond Systems.

Our Linux Development Kit offers you a pre-built and ready-to-use "Flash Linux" distribution with a file size of only 10MB and a super-low RAM requirement of only 5.5MB. Flash Linux is designed specifically to run on a solid-state flashdisk on Diamond Systems' Prometheus™ and Hercules™ embedded CPU boards. It enables you to build a completely solid-state Linux-powered embedded computer that boots in just 15 seconds. It includes the EXT3 journaling file system and Lilo bootloader.

Diamond Systems' Linux development kit will save you hours of time by giving you ready-to-run solutions for a development environment and a compact embedded OS running on a flashdisk module. We've done all the installation, downloading of latest updates, configuration, and integration to make Linux run reliably on our embedded CPUs with a minimal footprint.

Flash Linux is based on the version 2.4 Linux kernel. It incorporates several improvements and features that make it ideal for use with our CPUs:

Based on GCC 3.x for maximum compatibility with the latest distributions from RedHat and SuSE.

Console Redirection lets you communicate with the CPU over one of the CPU's serial ports (ASCII display mode only). All keyboard and display data is transmitted over the serial port. You can connect any computer running a terminal emulator program such as HyperTerminal to the CPU via a null modem cable and control the system as though you had an actual keyboard and monitor.

Improved USB Support allows you freedom to connect more USB devices, such as cameras and printers, in addition to mice and keyboards.

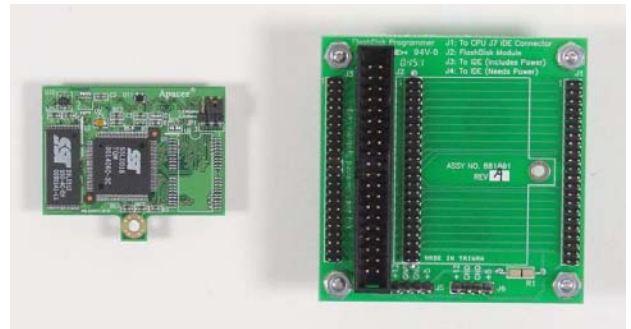
Universal Driver Software is pre-installed, so you can control the data acquisition circuitry on the CPU board.

The Linux Development kit is available in several versions:

- ◆ A **CD-ROM** with our Flash Linux files and instructions for installation and duplication. Select this version if you already have a flashdisk module and a Prometheus or Hercules CPU, and you just want to add Flash Linux to your system.
- ◆ A **32MB or 128MB IDE Flashdisk Module** (models FD-32 and FD-128) that mounts directly onto the CPU with Flash Linux pre-installed and ready to boot. Select this version if you are purchasing a flashdisk for the first time. This kit includes the Flash Linux CD-ROM and an accessory board for using both a flashdisk and an IDE drive with your CPU simultaneously. 40-pin and 44-pin IDE cables are also included.
- ◆ A **60GB 2.5" Hard Drive** with a full Slackware 9.1 desktop Linux distribution and the Flash Linux files. The Linux installation includes all the latest Linux updates, saving you hours of downloading and installation time. In addition, it includes a full KDE GUI desktop to support the video features on Hercules. Use this kit to quickly create a full-featured Linux development system with your CPU. Just connect the hard drive to the CPU's IDE connector and boot up. This kit includes the Flash Linux CD-ROM and an accessory board to neatly mount the hard drive directly onto the PC/104 stack.
- ◆ A **Combination Kit** that includes all the above items.



DK-LINUX-CD CD-ROM with Flash Linux distribution. Also ships with all kits below.



DK-LINUX-FD32, DK-LINUX-FD128 32MB / 128MB Flashdisk module (left) with Flash Linux pre-installed; includes IDE accessory board (right) and cable.



DK-LINUX-HD20 60GB hard drive (left) with full Linux pre-installed; includes hard drive mounting board (right) and cable.



DK-LINUX-COM Combination kit, includes all items shown above.