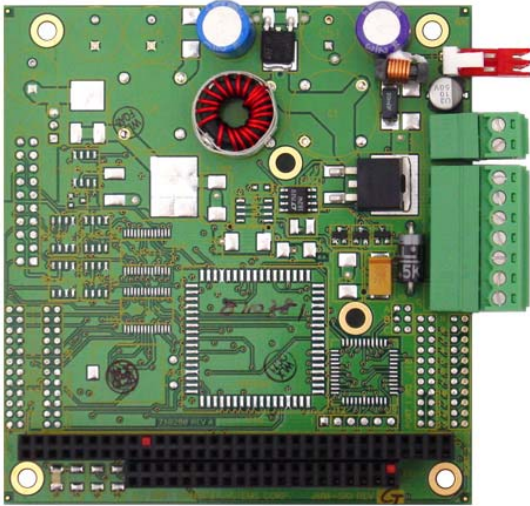


# JUPITER-MM-LP

25 Watt PC/104 DC/DC Power Supply for Vehicle Applications



- 25 watts output power power
- +5VDC output , 5A
- 7-30VDC input range
- Low-cost, lightweight design
- -40°C to +85°C Operation

## DESCRIPTION

Jupiter-MM-LP (JMM-LP) is a low-cost DC/DC power supply ideal for PC/104 applications with lower power requirements. This supply is the lightest-weight PC/104 DC/DC supply available anywhere, due to the fact that it requires no heatsink. Extended temperature rating is included at no additional charge, making Jupiter-MM-LP a true bargain compared to competitive products that require an additional charge.

## ORDERING INFORMATION

Part No.	Description
JMM-LP-XT	Jupiter-MM 25 Watt DC/DC power supply

## FOR MORE INFORMATION

Diamond Systems Corporation  
 1255 Terra Bella Avenue  
 Mountain View, CA 94043  
 Tel: 650-810-2500  
 Fax: 650-810-2525  
[techinfo@diamondsystems.com](mailto:techinfo@diamondsystems.com)

## SPECIFICATIONS

Feature	Jupiter-MM-LP
<b>Input voltage</b>	7-30VDC
<b>Transient protection</b>	1500W transient voltage suppressor
<b>Transient cutoff</b>	31V nominal
<b>+ 5v Output</b>	5A
<b>+12V Output</b>	
<b>-5V Output</b>	
<b>-12V Output</b>	
<b>Output protection</b>	Current limit / short circuit protection
<b>Output ripple</b>	<50mV RMS (+5V output, 50% load)
<b>Load regulation</b>	±3%
<b>Efficiency</b>	80% to 92%, varies with load and input voltage
<b>Dimensions</b>	3.55" x 3.775" (90mm x 96mm)
<b>PC/104</b>	J1 (64 pins) and J2 (40 pins) stackthrough connectors installed
<b>Operating Temperature</b>	-40 to +85°C
<b>Weight</b>	2.5oz / 71g