

- Insyde Software (<http://www.insydesw.com>)
- Byosoft Co., Ltd (<http://byosoft.com.cn/en/index.asp>)

## 5.9 Operating System Installation

### 5.9.1 Windows\* XP SP3

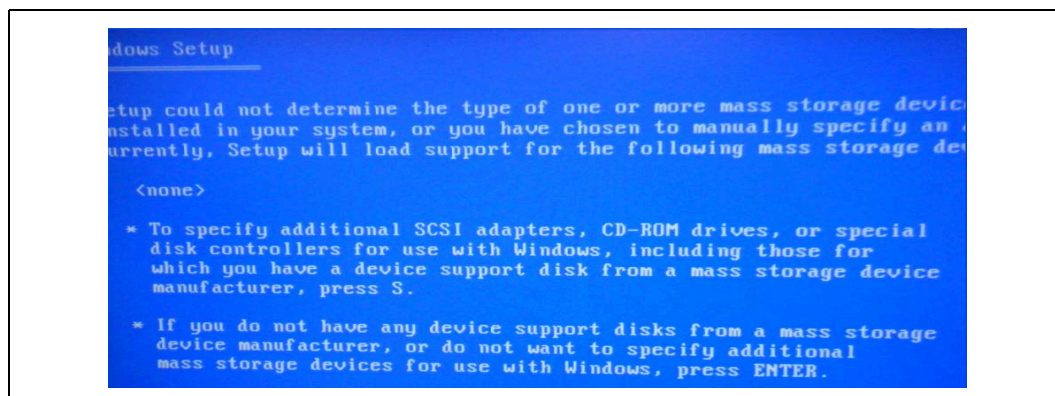
The Intel® PCH EG20T SATA does not support an IDE interface that is compatible with legacy drivers and Windows\* XP SP3 does not contain the required SATA AHCI driver natively. Use the following instructions to install the Intel® PCH EG20T SATA AHCI driver during the installation of Windows XP SP3.

*Note:*

During the installation of Windows XP, only single USB device (the USB floppy disk) is allowed to be connected to the system at USB port x23 else Windows XP installation will not be successful. This is due to USB issue in the Intel® PCH EG20T A0 and A1 silicon. Refer to the *Intel® Platform Controller Hub EG20T – Sightings Report* for more information. Some USB floppy drivers are not supported during F6 installation. See details at <http://support.microsoft.com/kb/916196>.

1. Copy the files in 'FD\_Inst\_WinXP' in the SATA driver package to the root of a floppy disk. The SATA driver package can be obtained from <http://edc.intel.com/Platforms/Atom-E6xx/#software>.
  - iohsata.cat
  - iohsata.inf
  - iohsata.sys
  - txtsetup.oem
2. Make sure that the target computer has a compatible floppy drive.
3. Insert the floppy disk prepared in step 1 into the floppy drive.
4. Insert the Windows XP SP3 installer into the CD-ROM and boot from the CD-ROM to start the Windows XP SP3 installation.
5. Press <F6> to add further SCSI/RAID drivers when prompted during the very early stage of the Windows installation. (Figure 17)

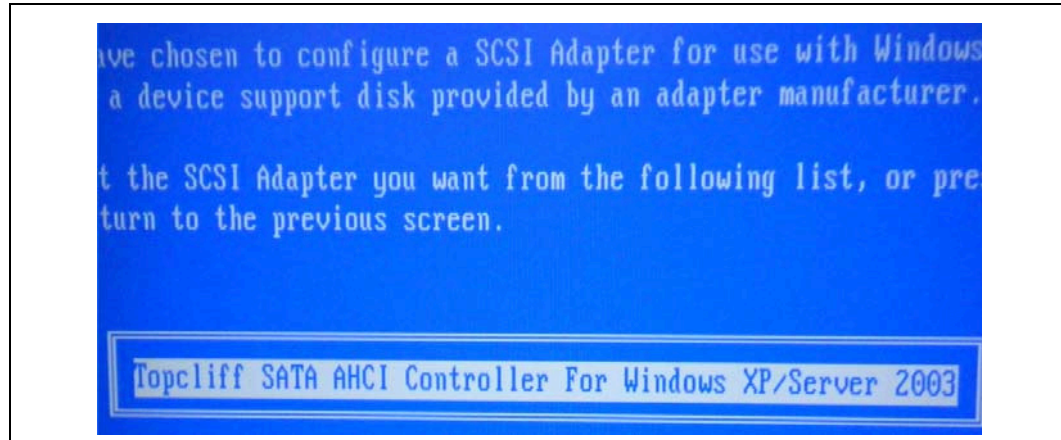
**Figure 17. Installing the Intel® PCH EG20T SATA Driver - press F6**



6. Press <S> to add an additional SCSI device. Select the correct driver (Intel® PCH EG20T SATA AHCI Controller for Windows XP) and press <ENTER> to continue the

installation. This will install the Intel® PCH EG20T SATA AHCI controller driver (Figure 18).

**Figure 18. Selecting the SCSI Adapter**



**Note:** Slipstreaming the Intel® PCH EG20T SATA AHCI controller driver onto the Windows XP SP3 installer will not work.

7. During the installation, the message box below may appear:



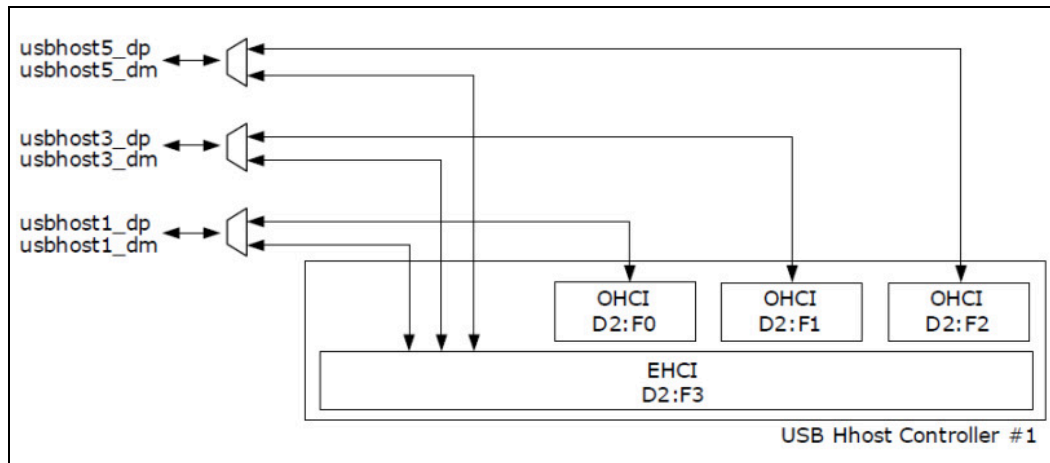
At this time, any low/full speed USB devices (for example the keyboard and mouse) that are connected to USB port 1 (Device2:Function0), USB port 3 (Device2:Function1) and USB Port 5 (Device2:Function2) will not function for a brief period during installation. This may appear due to an OHCI driver issue for USB Host controller #1 (Device 2: Function 0-2). These USB ports will resume working once you can dismiss the above message box by clicking Yes. Figure 19 indicates the internal USB port connections.

The proposed workarounds for this issue are:

- For a customer design that has PS2 ports, please use a PS2 mouse and keyboard to facilitate the installation.
- For a customer design that has USB port 0/2/4 (USB Host controller #0 Device 8:Function 0-2), use those ports for the USB mouse and keyboard connection to facilitate the installation.

- For a customer design that has only ports 1/3/5 (USB Host controller #1 Device 2: Function 0-2), please connect a USB mouse and keyboard through the USB high speed hub.

**Figure 19. USB Host Controller #1 Port Connection**



8. Finish the Windows XP installation according to your needs.