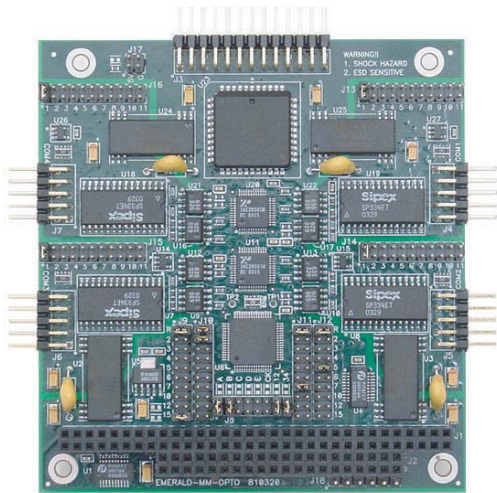


# EMERALD-MM-OPTO

2 or 4-Port RS-232/RS-422/RS-485 PC/104 Module



- 2-4 Optoisolated serial ports, RS232/422/485 protocols
- Full handshake RS232
- Jumper-selectable protocols, addresses and interrupts
- 16C2850 UARTs with 128-byte FIFOs
- 460.8Kbps max baud rate
- 24 digital I/O lines with programmable direction

## DESCRIPTION

Emerald-MM-Opto provides 2 or 4 optically isolated serial ports with RS-232, RS-422, and RS-485 protocols, as well as 24 digital I/O lines, all on a single board. The optical isolation of 1000V DC or AC protects your embedded system from ground differentials or noise spikes on the serial ports that could damage non-isolated boards. Each port is isolated from the other ports as well as the system. An optional 3M $\Omega$ / 220pF isolation bridge between port ground and system ground is available. Extended temperature capability (-40 to +85°C) enables the board to operate reliably in vehicles such as trains and buses.

In addition to ruggedness, Emerald-MM-Opto offers flexibility with the following advanced features:

- Independent protocol and IRQ configuration for each serial port.
- Eight different I/O address combinations with jumper selection
- 16C2850 UART chips with 128-byte FIFOs support high-speed data rates at up to 460kbps without overloading the system processor

## SPECIFICATIONS

# ports	2 or 4
<b>Protocols Supported</b>	RS232, RS422 & RS485, jumper selectable
<b>Max Baud Rate</b>	460.8Kbps
<b>Communications</b>	5,6,7 or 8 data bits; Even, odd or no parity
<b>Base UART</b>	16C2850
<b>FIFO</b>	128 bytes
<b>Address / Interrupt Configuration</b>	Jumper
<b>Digital I/O</b>	24, programmable direction
<b>Short protection</b>	Continuous, all outputs
<b>Bus Interface</b>	PC/104 (ISA)
<b>Power Draw (typical)</b>	+5VDC $\pm$ 10% @ 300mA
Operating temp	-40°C to +85°C
<b>Weight</b>	3.0oz / 85g
# ports	2 or 4

- Auto-flow control enables easy RS-485 operation by automatically enabling and disabling the transmitter during data transmission, preventing bus conflicts and ensuring compatibility with standard serial port software.

- Multiple line termination options to support RS-422 or RS-485 networks, including 1K pull-up / pull-down resistors and 150 end termination resistors.

The 24 digital I/O lines are based on an 82C55 chip and feature programmable direction in 4- and 8-bit groups. All I/O lines contain user-configurable 10K pull-up resistors. This 2-in-1 combination of serial ports and digital I/O provides more functionality in less space.

## ORDERING INFORMATION

Part No.	Description
<b>EMM-OPT2-XT</b>	2 opto-isolated RS-232/422/485 ports, 24 digital I/O
<b>EMM-OPT4-XT</b>	4 opto-isolated RS-232/422/485 ports, 24 digital I/O

## FOR MORE INFORMATION

Diamond Systems Corporation  
1255 Terra Bella Avenue  
Mountain View, CA 94043  
Tel: 650-810-2500  
Fax: 650-810-2525  
[techinfo@diamondsystems.com](mailto:techinfo@diamondsystems.com)