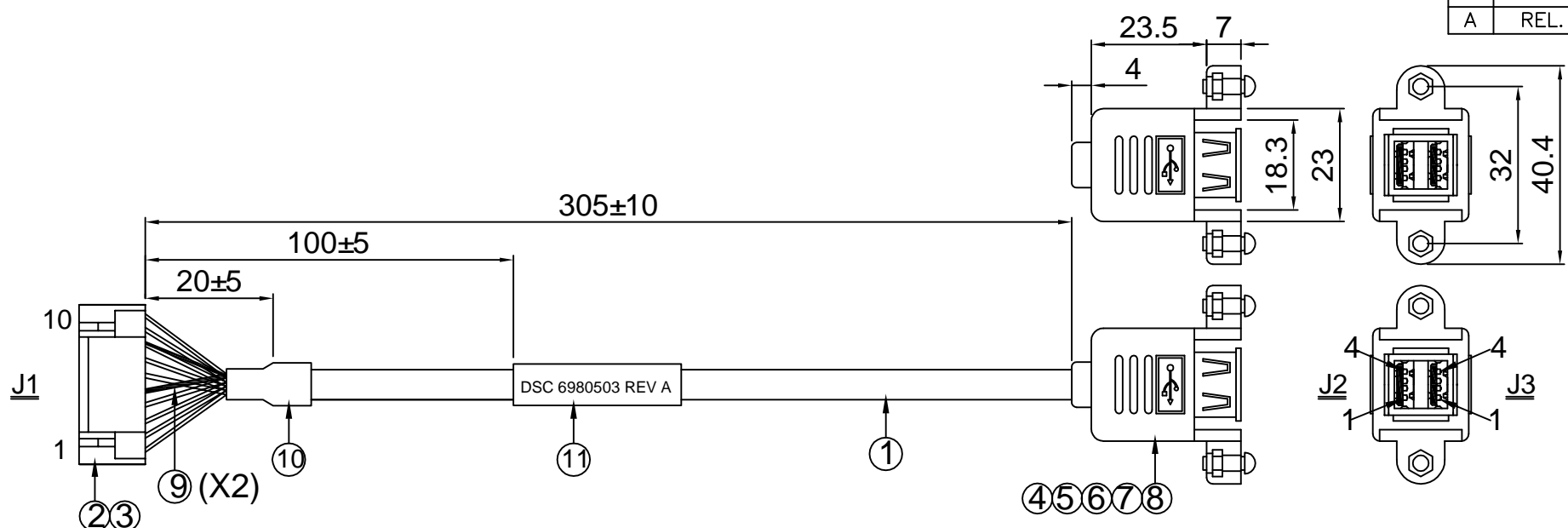
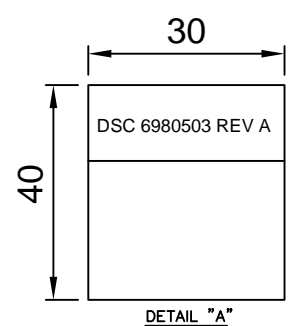


REV.	ECO.	NO.	APPD
A	REL.		JHONNY 08/22'13



10	BRAID		SHELL
9	BROWN		4
8	BLUE	TWISTED PAIR	3
7	YELLOW		2
6	ORANGE		1
5	BRAID		SHELL
4	BLACK		4
3	GREEN	TWISTED PAIR	3
2	WHITE		2
1	RED		1
J1	WIRE COLOR	J2	J3

WIRE CONNECTION TABLE



11	LABEL	1PC	W=30.0MM, L=40.0MM, CONTENT:SEE "A"	
10	H.S. TUBE	1PC	I.D=Ø6.0MM, UL224, COLOR: BLACK, L=15MM 125°C, 600V, VW-1 P/N:H-2(+)& RSFR-H 125°C, 300V, VW-1 P/N:H-2(CB)& RSFR(CB)	E255394 & E203950
9	H.S. TUBE	2PCS	I.D=Ø1.0MM, UL224, COLOR: BLACK, L=20MM 125°C, 600V, VW-1 P/N:H-2(+)& RSFR-H 125°C, 300V, VW-1 P/N:H-2(CB)& RSFR(CB)	E255394 & E203950
8	H.S. TUBE	1PC	I.D=Ø1.0MM, UL224, COLOR: BLACK, L=8MM 125°C, 600V, VW-1 P/N:H-2(+)& RSFR-H 125°C, 300V, VW-1 P/N:H-2(CB)& RSFR(CB)	E255394 & E203950
7	SCREW+NUT	2SETS	ROUND #4*8 #4-40UNC WITH #4-40 HEX NUT 4.7*1.9	
6	OUTER MOLDED	12.0G	PVC 45P UL94V-0, COLOR:BEIGE P/N:GH-499	
5	INNER MOLDED	4.0G	PE UL94V-2, COLOR:NATURAL P/N:GH-498	
4	USB A FEMALE	1PC	MATERIAL: PBT, UL94V-0, INSULATION: WHITE USB A TYPE FEMALE, DUAL PORTS, GOLD FLASH SHELL NICKEL PLATED, SOLDER TYPE	
3	CONTACT	10PCS	MATERIAL: PHOSPHOR BRONZE, TIN PLATED WIRE RANGE: #30~#26, JST P/N:SSH-002T-P0.2 WIRE RANGE: #32~#28, JCTC P/N:11257TOP-2E	
2	10P HOUSING	1PC	MATERIAL: PBT, UL94V-0, COLOR: NATURAL WHITE PITCH: 1.25MM, 1X10 JST P/N:GHR-10V-S JCTC P/N:11257H00-10P-L	E60389 E338796
1	CABLE	1PC	UL2725#28x2PR(WHITE, GREEN, YELLOW, BLUE)+ #28x4C(RED, BLACK, ORANGE, BROWN)+AEB, JACKET: PVC, COLOR: BEGIE, OD: 5.5MM, USB2.0	E238846
No.	ITEM	Q'TY	DESCRIPTION	UL NO.

- NOTES:
- ALL DIMENSIONS ARE "MM".
 - ANY OPEN, MISWIRING, SHORT & INTERMITTENT ARE NOT PERMITTED.
 - Connection Resistance : 2.0Ω
Insulation Resistance : 20MΩ
Hi-POT Voltage : 300V DC
Hi-POT Duration : 10ms
 - THE PRODUCT MUST BE COMPLY WITH THE DIRECTIVE OF ROHS.
 - PACKAGE: 1PC/BAG.



X.:±	.XX:±	X°.±	.XX°.±	PART NO.(INTENDED USE) 6980503 REV A	TITLE: CABLE HARNESS, USB2.0 1.25MM CONNECTOR TO 2x USB-A RECEPTACLE PANEL MOUNT CNRNRCTOR
.X:±0.5	.xxx:±	.X°.±	.xxx°.±	APPD: JHONNY 08/22'13	DWG NO.: GL-GH659
G-LINKS Co.				CHKD: WUZUJIAN 08/22'13	SCALE SHEET REV. NONE 1/1 A
				DR: YHTJH 08/22'13	