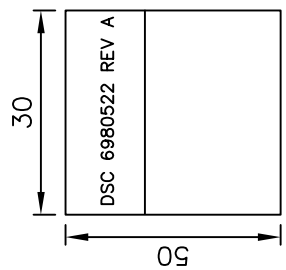


J1	J2
1	BROWN
3	WHITE
2	RED
4	WHITE
6	BLACK
7	WHITE
9	GREEN
8	WHITE
10	BLUE
12	WHITE
11	WHITE
14	WHITE
19	WHITE
17	WHITE
16	YELLOW
15	ORANGE
18	RED
13	BRAID
20	S

No.	ITEM	Q'TY	DESCRIPTION	UL NO.
17	LABEL	1PC	W=30.0MM, L=50.0MM, CONTENT: SEE "A"	
16	KEY	1PC	2.0 KEY COLOR: WHITE ECI P/N: 2032KEY	
15	H.S. TUBE	5PCS	H.S. TUBE OD: 2.0MM*8MM COLOR: BLACK	E215319
14	H.S. TUBE	6PCS	H.S. TUBE OD: 0.8MM*25MM COLOR: BLACK	E215319
13	PVC	7G	PVC-BK10/50P UL94V-0	E220997
12	PE	3G	PE-5321	
11	NUT	2PCS	HEX NUTS 4.75*2MM #4-40	
10	SCREW	2PCS	HEX SCREWS 4.75*18MM #4-40	
9	TAPE	1PC	HI TEAMP TAPE W: 15MM*L: 60MM	
8	COPPER FOIL	1PC	COPPER FOIL W: 20*L: 50MM	
7	H.S. TUBE	5PCS	H.S. TUBE OD: 1.0MM*8MM COLOR: BLACK	E215319
6	H.S. TUBE	5PCS	H.S. TUBE OD: 0.8MM*10MM COLOR: BLACK	E215319
5	H.S. TUBE	1PC	H.S. TUBE OD: 7.0*15MM COLOR: BLACK	E215319
4	HDMI 19P	1PC	HDMI 19P FEMALE TYPE CONNECTOR WITH PCB	
3	TERMINAL	19PCS	GOLD FLASH ECI P/N: 2014-P	
2	20P HOUSING	1PC	2MM 2X10P COLOR: BLACK ECI P/N: 2032H-2X10P	E115256
1	CABLE	1PC	UL20276(#30X1P+D+A+MYLAR)*5+#30*4C+A+B, OD: 6.0MM JACKET: PVC, COLOR: BLACK HDMI 1.4 CABLE	E119932



- NOTES:
- ALL DIMENSIONS ARE "MM".
 - ANY OPEN, MISWIRING, SHORT & INTERMITTENT ARE NOT PERMITTED.
 - CONNECTION RESISTANCE: 2.0Ω
 - INSULATION RESISTANCE: 20MΩ/300V DC MIN
 - THE PRODUCT MUST BE COMPLY WITH THE DIRECTIVE OF ROHS.
 - PACKAGE: 1PC/BAG.

REV. ECO. NO. APPD	WU/WHU	10/04'16
A	REL.	

PART NO.(INTENDED USE)		TITLE:	
6980522 REV A		CABLE HARNESS, HDMI FEMALE 19 PIN TO 2MM 2X10 CONNECTOR	
APPD:	WU/WHU	10/04'16	DWG NO.:
CHKD:	WUZUJIAN	10/04'16	GL-GH794
DR:	JASON	10/04'16	SCALE SHEET REV.
			NONE 1/1 A

.XX:±		.XX':±	
.XXX:±		.XXX':±	

RoHS compliant

G-LINKS CO.