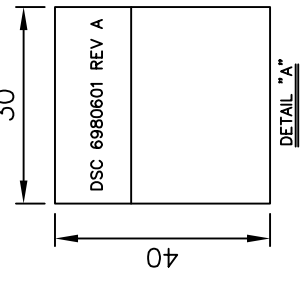


10	9	8	7	6	5	4	3	2	1	J1	J2	J3
YELLOW	BROWN	ORANGE	RED	BLACK	BLACK	YELLOW	BROWN	ORANGE	RED	WIRE COLOR	J2	J3
-	-	-	-	-	5	8	2	7	3	WIRE CONNECTION TABLE		
-	-	-	-	-	-	-	-	-	-			
-	-	-	-	-	-	-	-	-	-			
-	-	-	-	-	-	-	-	-	-			
-	-	-	-	-	-	-	-	-	-			
-	-	-	-	-	-	-	-	-	-			
-	-	-	-	-	-	-	-	-	-			

7	6	5	4	3	2	1
LABEL	SCREW	PLASTIC HOOD	D-SUB 9 MALE	CRIMP TERMINAL	10P HOUSING	JUMP WIRE
1PC	4PCS	2PCS	2PCS	10PCS	1PC	2PCS
W=30.0MM, L=40.0MM, CONTENT SEE "A"						
HEX SCREW #4-40UNC 4.75x11.8MM NICKEL PLATED						
PLASTIC HOOD DKN-9/9 COLOR:BLACK WITH HEX NUT						
DB9 MALE SOLDER TYPE, INSULATION COLOR:BLACK, CONTACT G/F						
CRIMP TERMINAL P/N: 77138-001F						
2.0MM 2X5P COLOR:BLACK FCI P/N:10073599-010LF						
UL1061#28 COLOR:YELLOW						
UL1061#28 COLOR:ORANGE						
UL1061#28 COLOR:RED						
UL1061#28 COLOR:BROWN						
UL1061#28 COLOR:BLACK						
No.	ITEM	Q'TY	DESCRIPTION			



- NOTES:
- ALL DIMENSIONS ARE "MM".
 - ANY OPEN, MISWIRING, SHORT & INTERMITTENT ARE NOT PERMITTED.
 - CONDUCTION RESISTANCE:2Ω MAX
INSULATION RESISTANCE:20MΩ MIN/DC 300V
 - THE PRODUCT MUST BE COMPLY WITH THE DIRECTIVE OF RoHS.
 - PACKAGE:1PC/BAG.

X:±	.XX:±	X':±	.XX':±	PART NO.(INTENDED USE)		TITLE: DUAL SERIAL PORT CABLE LATCHING 2X5 2MM TO DUAL DB9M	
.X:±0.5	.XXX:±	.X':±	.XXX':±	6980601 REV A	DWG NO.: GL-GH847		
APPD: LARRY 06/05'20				SCALE [SHEET REV.] NONE 1/1 A			
CHKD: WUZUJIAN 06/05'20				DR: AARON 06/05'20			

